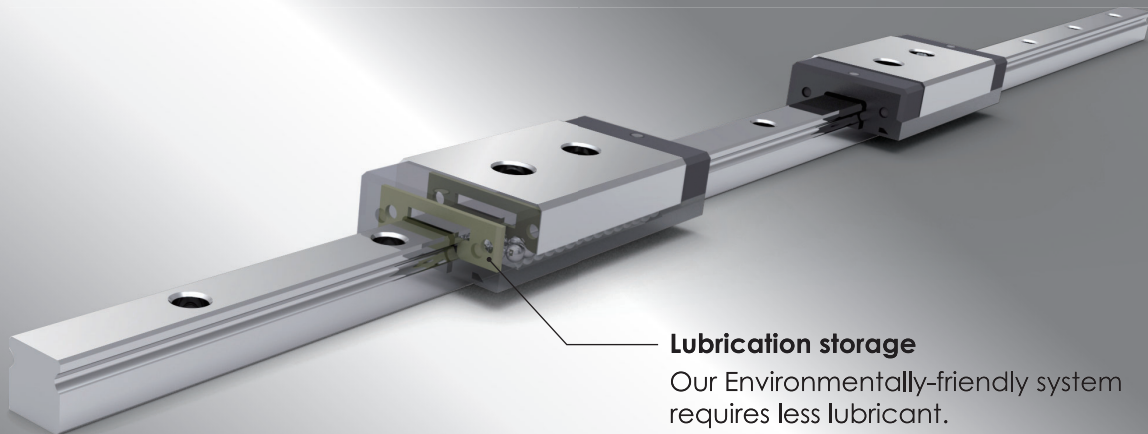
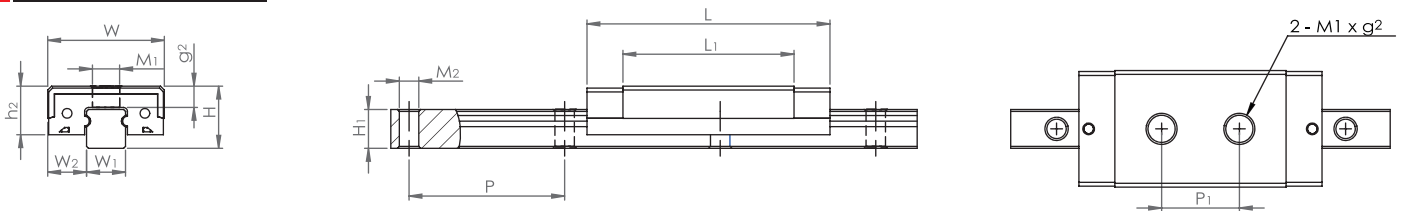


Miniature Linear Guide - MRU 2M



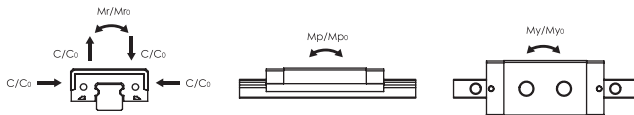
Lubrication storage
Our Environmentally-friendly system requires less lubricant.

Dimension



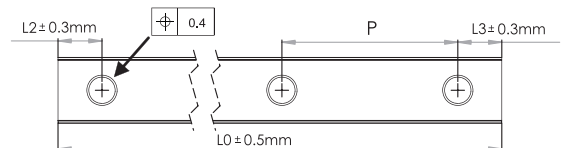
Model Code	Fabricate Dimensions		Rail Dimension(mm)				Block Dimension(mm)					Load Capacities (N)		Static Moment (Nm)			Weight (g)		
	H	W ₂	W ₁	H ₁	P	M ₂	W	L	L ₁	h ₂	P ₁	M _x g ²	C _{100B} (dyn)	C ₀ (stat)	Mr ₀	Mp ₀	My ₀	Block	Rail (per 50mm)
MRU 2MN	3.2	2	2	2	8	M1	6	12.5	8.8	2.5	4	M1.4x1.1	158	349	0.43	0.54	0.54	0.65	0.14

Load capacities are calculated according to ISO 14728. To compare the rating life definition and the load capacities: $C_{50B} = 1.26 \times C_{100B}$



Length of Rail

Butt-jointing is required when lengths exceed L_{max}.
(For more detailed information, please contact **cpc** for technical support.)



Model Code

MR	U	2	M	N	ZU	2	V1	P	-100L	-2	-2	II	J	
													Customization code	
													Number of rails on the same moving axis	
													End hole pitch (mm)	
													Starting hole pitch (mm)	
													Rail length (mm) / 500max.	
													Accuracy Grades: P (Precision), H (High), N (Normal)	
													Preload classes: V0: clearance VS: standard V1: light preload	
													Block quantity: Quantity of the runner block	
													SU: end seal + bottom seal ZU: end seal + bottom seal + lubrication storage	
													Block type: L: long N: standard	
													Rail type: M: standard W: wide	
													Rail dimension: The width of rail ex.: 2	
													Special Rail U: upward screwing rail	
Product Type: MR: Miniature Linear Guide														

Unit: mm

MR-04-S32-EN 2019.03.29 Printed in Taiwan

cpc CHIEFTEK PRECISION Co., LTD.

HEADQUARTERS
CHIEFTEK PRECISION Co., LTD.
No.3, Dali 1st Rd., Sinshih Township,
Tainan Science Park, 741-45 Tainan, Taiwan, R.O.C
TEL:+886-6-505 5858 Http://www.chieftek.com
E-mail:service@mail.chieftek.com

CHIEFTEK PRECISION USA
2280 E. Locust Court,
Ontario, CA 91761, USA
Tel: +1-909-628-9300
Fax: +1-909-628-7171

cpc Europa GmbH
Industriepark 314,
D-78244 Gottmadingen, Germany
TEL:+49-7731-59130-38
FAX:+49-7731-59130-28

CHIEFTEK MACHINERY KUNSHAN Co., LTD.
No.1188, Hongqiao Rd, Kunshan,
Jiangsu, P.R. China
TEL:+86-512-5525 2831
FAX:+86-512-5525 2851



* cpc reserves the right to revise any information (technical details) any time without notice, for printing mistakes or any other incidental mistakes. We take no responsibility.